

Homework Assignment #20

(due Oct. 5, 2020, 11pm, via gradescope)

1. Griffiths 4.3
2. Griffiths 4.4
3. Griffiths 4.6

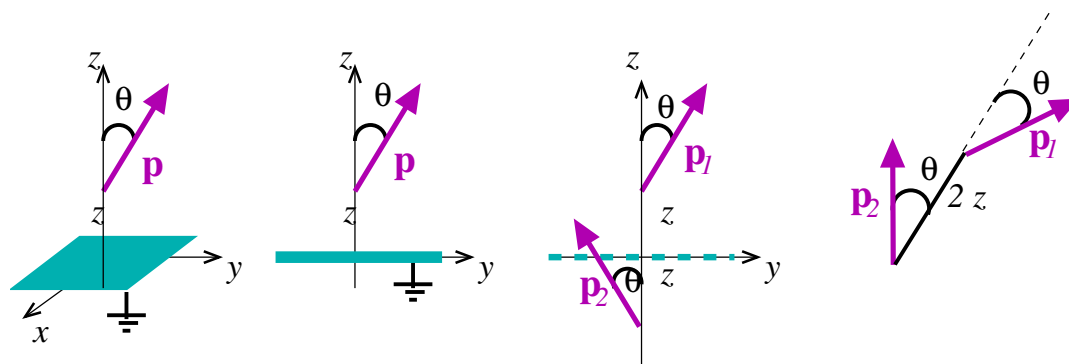


Fig.1: Dipole above infinite grounded conducting plane, distance z above. Fig.2: Method of Images

4. Griffiths 4.9

For 4.9a express \mathbf{E} in cartesian coordinates. For 4.9b use Eq. (3.104).